

The Collection

16 Canterbury Homes

Sun-led architecture for long-term living.
Designed in Christchurch, built for the way
Canterbury families actually live.

Homes designed around the sun.

Solstice Homes is the residential collection by Hamilton Projects Ltd — a Christchurch builder with a long record of delivering considered, warm, and durable homes across Canterbury.

Every plan in the collection is oriented around the sun. Living spaces open north, bedrooms are zoned for quiet, and each home is designed for warmth in winter and shade in summer.

The collection spans 120 to 280 square metres, with two to four bedrooms. Starter, Family, and Premium tiers share the same design principles: generous light, honest materials, and long-term livability.

Every Solstice home is built to the same standard — double-glazed, well-insulated, and finished by a small team that has worked together for years. Sixteen plans, one quiet standard of care.

16

plans in the collection

120–280

m² floor area range

2–4

bedrooms

3

tiers — Starter, Family, Premium

Sixteen plans.

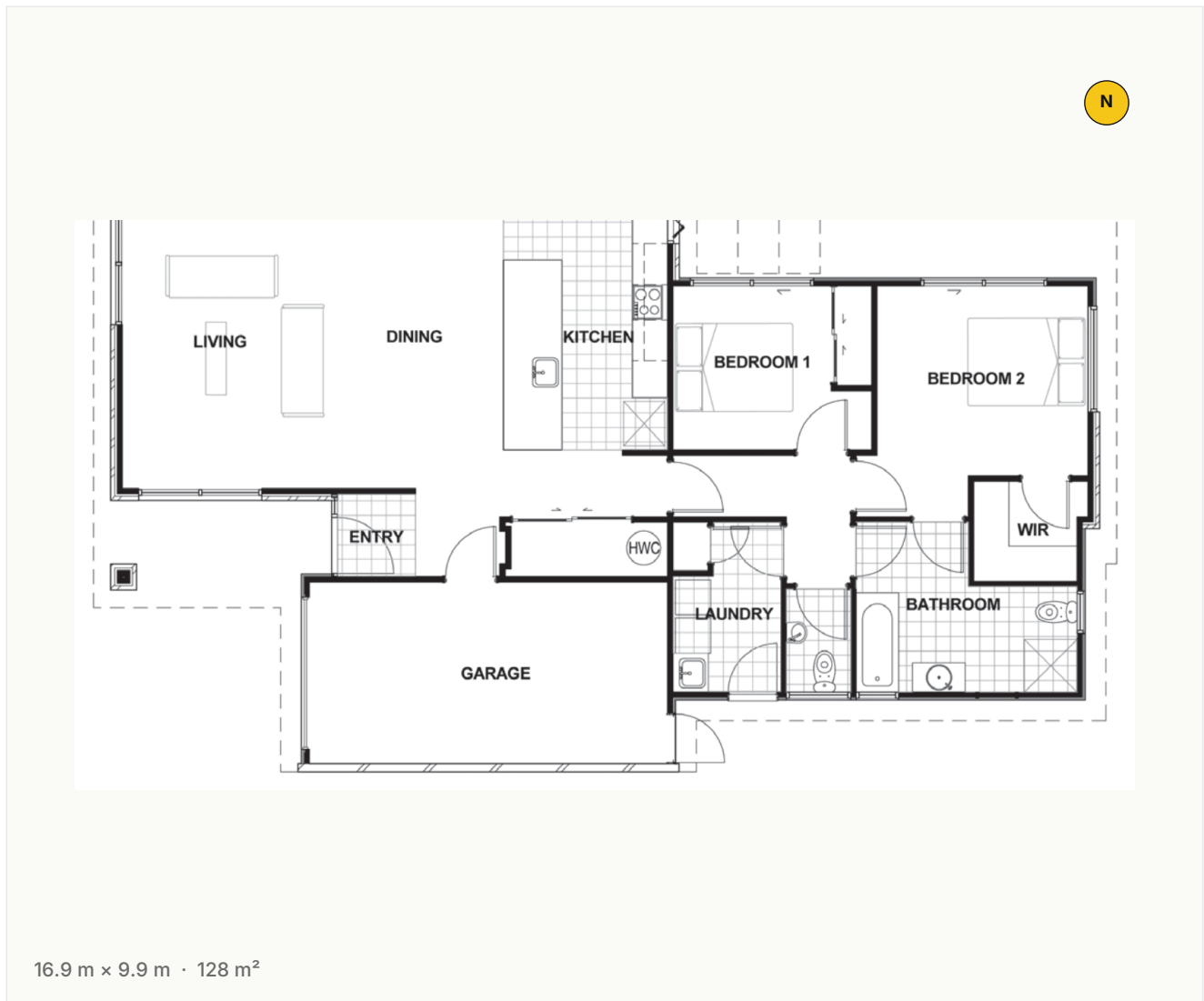
One considered standard.

PLAN	AREA	BEDS	BATHS	TIER
Hutt	128 m ²	2	1	STARTER
Somers	142 m ²	3	2	STARTER
Torlesse	148 m ²	3	2	STARTER
Oakden	168 m ²	3	2	FAMILY
Binser	176 m ²	4	2	FAMILY
Thomson	184 m ²	4	2	FAMILY
Rolleston	192 m ²	4	2	FAMILY
Murchison	198 m ²	4	2	FAMILY
Tasman	206 m ²	4	2	FAMILY
Sefton	214 m ²	4	2	FAMILY
Aspiring	226 m ²	4	2	PREMIUM
Earnslaw	236 m ²	4	2	PREMIUM
Cook	256 m ²	4	3	PREMIUM
Tutoko	262 m ²	4	2	PREMIUM
Dampier	268 m ²	4	2	PREMIUM
Hicks	278 m ²	4	3	PREMIUM

STARTER · 2 BEDROOM

Hutt

128 m ²	2 bed	1 bath	1 garage	16.9 × 9.9 m footprint
------------------------------	-----------------	------------------	--------------------	----------------------------------



ABOUT THIS PLAN

A smart, compact two-bedroom starter — open-plan living flows onto the garage, with an efficient footprint ideal for couples, first-home buyers, or a holiday retreat.

STARTER · 3 BEDROOM

Somers

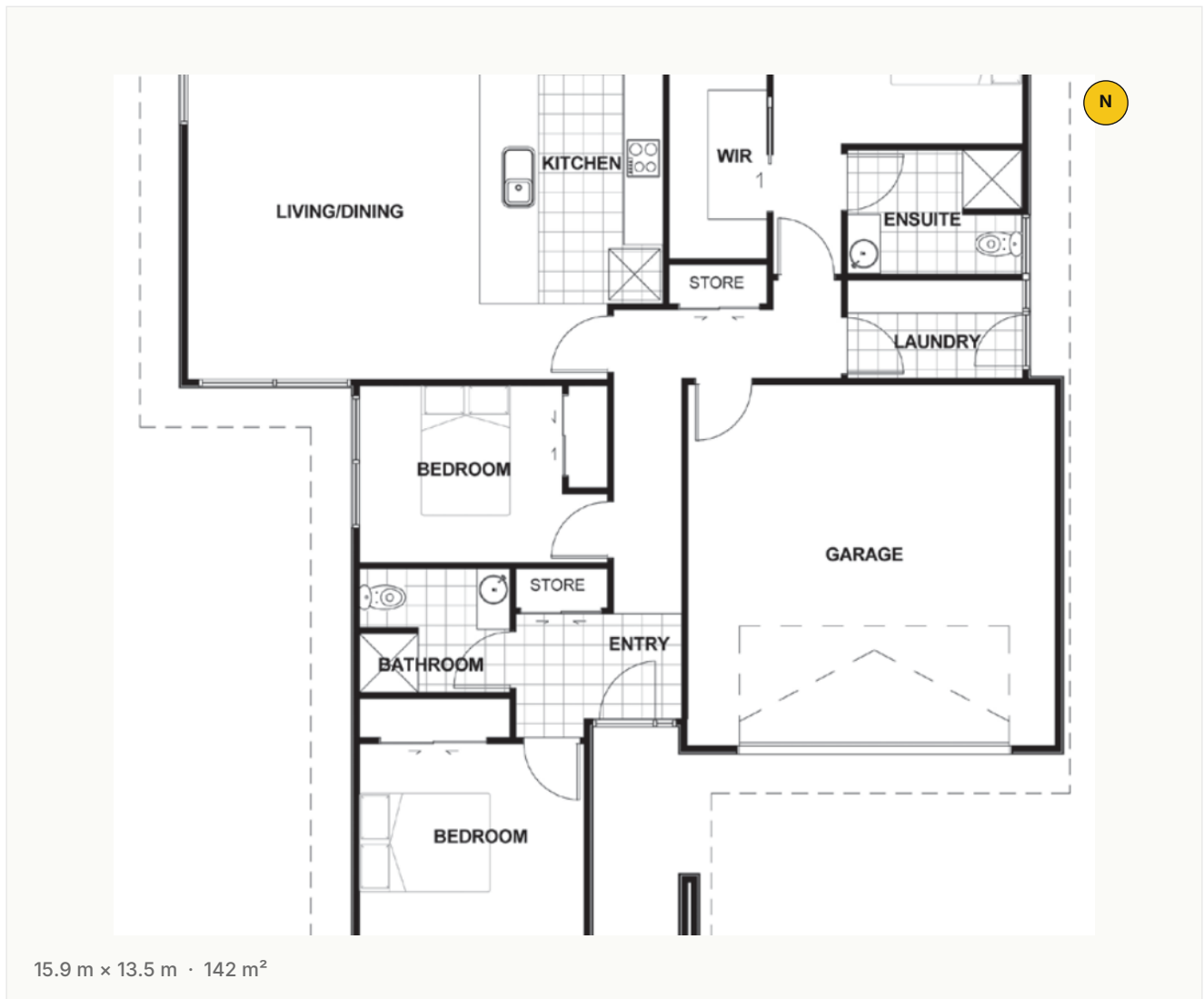
142
m²

3
bed

2
bath

2
garage

15.9 × 13.5
m footprint



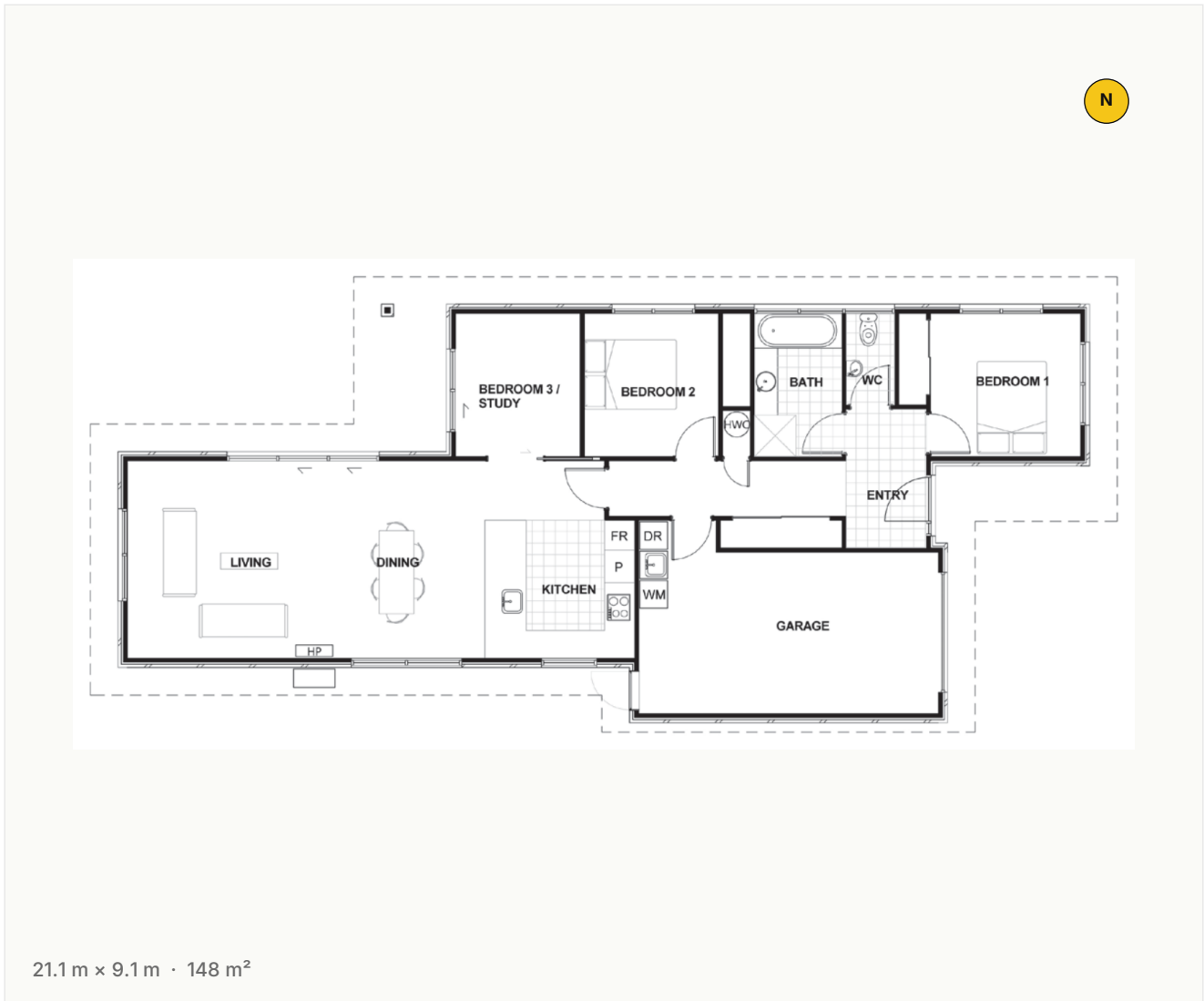
ABOUT THIS PLAN

An easy-living three-bedroom home built around a central living, dining, and kitchen core with double garage. A practical starter for growing households.

STARTER · 3 BEDROOM

Torlesse

148 m ²	3 bed	2 bath	2 garage	21.1 × 9.1 m footprint
------------------------------	-----------------	------------------	--------------------	----------------------------------



ABOUT THIS PLAN

A longer, linear three-bedroom plan with generous social living, separate laundry, and double garage. Suits narrower sites with wide-street frontage.

FAMILY · 3 BEDROOM

Oakden

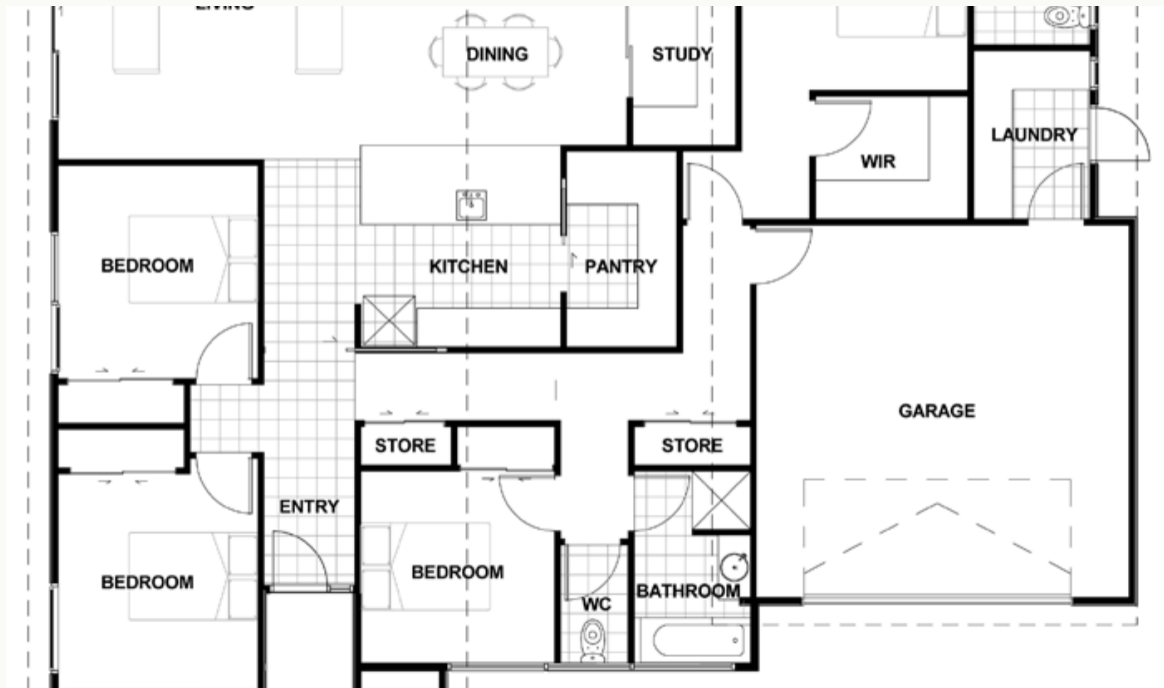
168
m²

3
bed

2
bath

2
garage

16.8 × 13.5
m footprint



16.8 m × 13.5 m · 168 m²

ABOUT THIS PLAN

A family-ready three-bedroom layout with an open-plan heart, dedicated family bathroom, and double garage — designed for everyday flow and comfort.

FAMILY · 4 BEDROOM

Binser

176
m²

4
bed

2
bath

2
garage

19.4 × 11.0
m footprint



ABOUT THIS PLAN

A four-bedroom family home with shared bathroom, walk-in robe to the master, and a spacious combined living-dining-kitchen zone.

FAMILY · 4 BEDROOM

Thomson

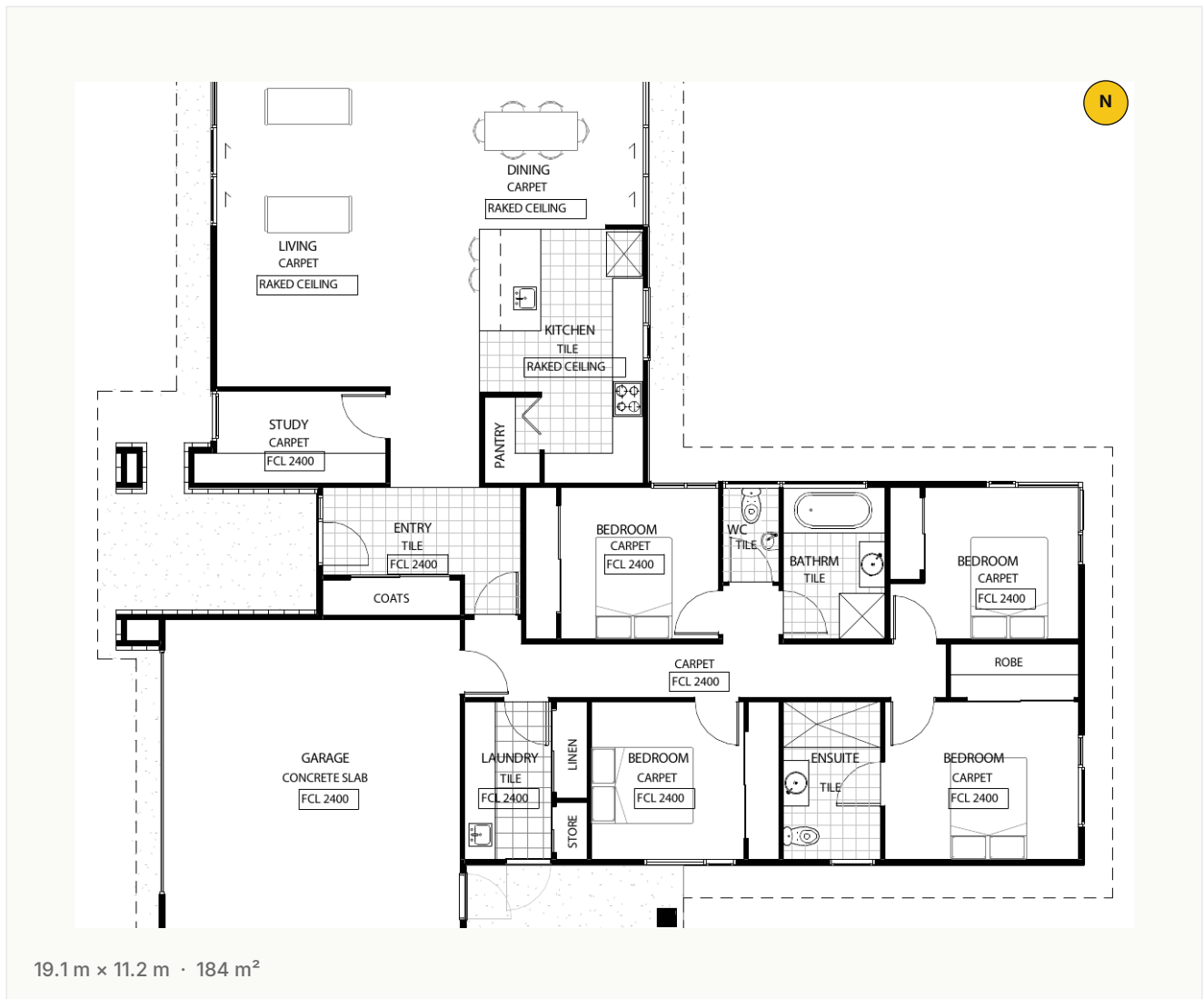
184
m²

4
bed

2
bath

2
garage

19.1 × 11.2
m footprint



ABOUT THIS PLAN

Four bedrooms grouped around a central bathroom, with open-plan living opening onto outdoor space and internal-access double garage.

FAMILY · 4 BEDROOM

Rolleston

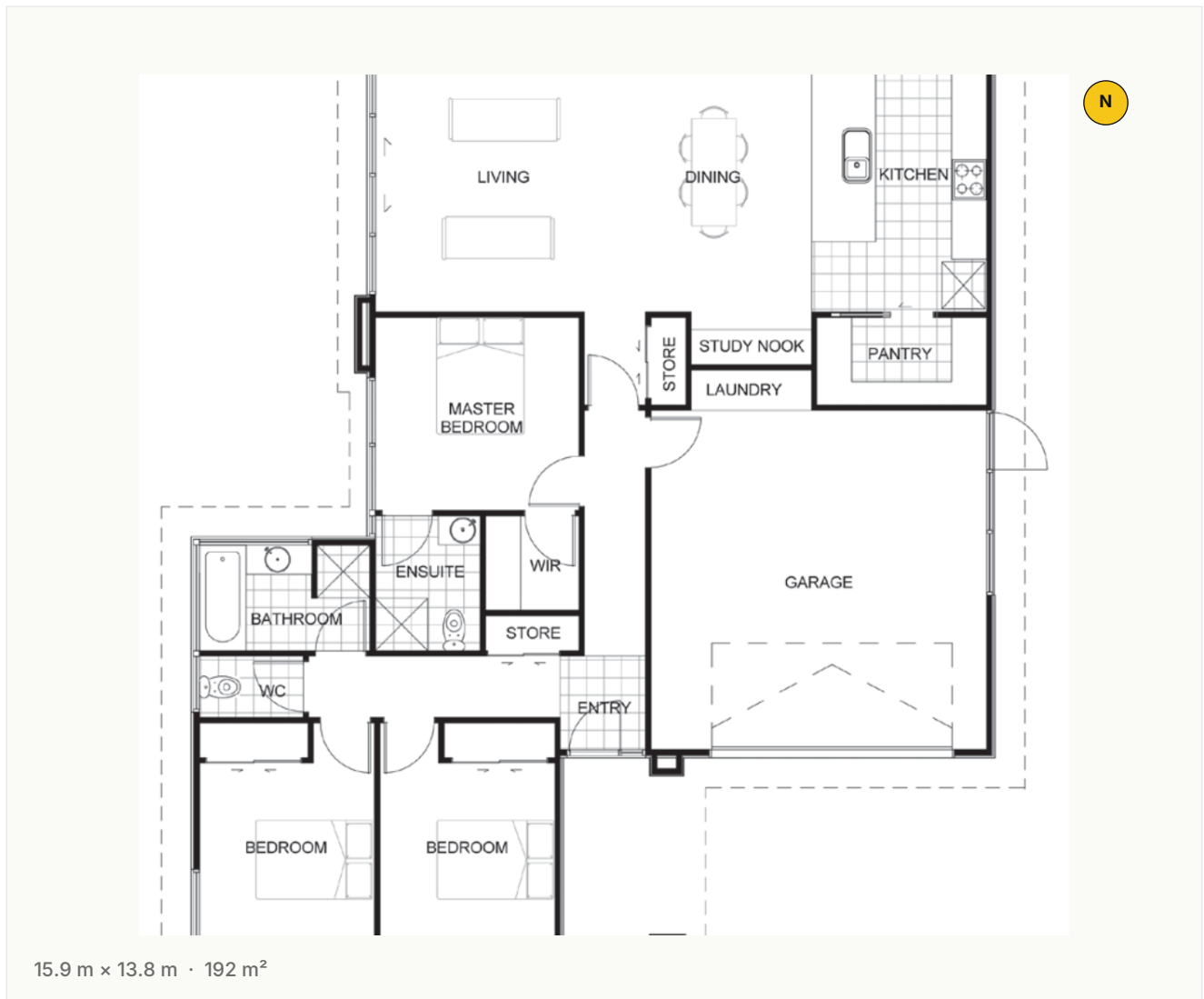
192
m²

4
bed

2
bath

2
garage

15.9 × 13.8
m footprint



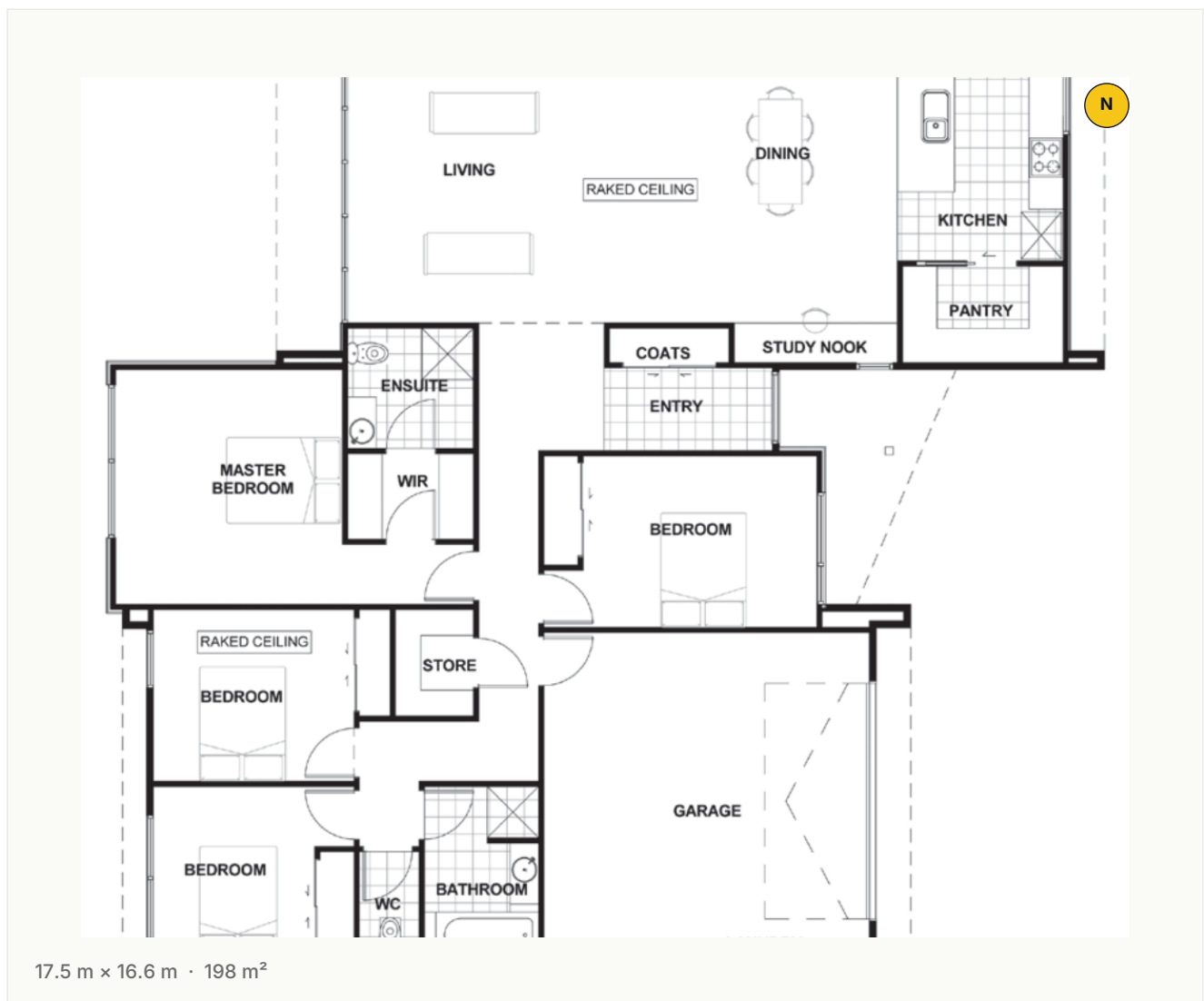
ABOUT THIS PLAN

A balanced four-bedroom family plan with separate living, generous kitchen-dining, and a well-zoned bedroom wing.

FAMILY · 4 BEDROOM

Murchison

198 m ²	4 bed	2 bath	2 garage	17.5 × 16.6 m footprint
------------------------------	-----------------	------------------	--------------------	-----------------------------------



ABOUT THIS PLAN

A larger four-bedroom family home with ensuite to master, extra storage, and a roomy open-plan living core.

FAMILY · 4 BEDROOM

Tasman

206
m²

4
bed

2
bath

2
garage

15.0 × 14.5
m footprint



ABOUT THIS PLAN

Four bedrooms plus a dedicated lounge and open-plan kitchen-dining — a versatile layout for busy families who want two living zones.

FAMILY · 4 BEDROOM

Sefton

214
m²

4
bed

2
bath

2
garage

19.3 × 15.7
m footprint



19.3 m × 15.7 m · 214 m²

ABOUT THIS PLAN

A larger four-bedroom design with ensuite, walk-in robe, separate lounge, and integrated laundry. Generous through and through.

PREMIUM · 4 BEDROOM

Aspiring

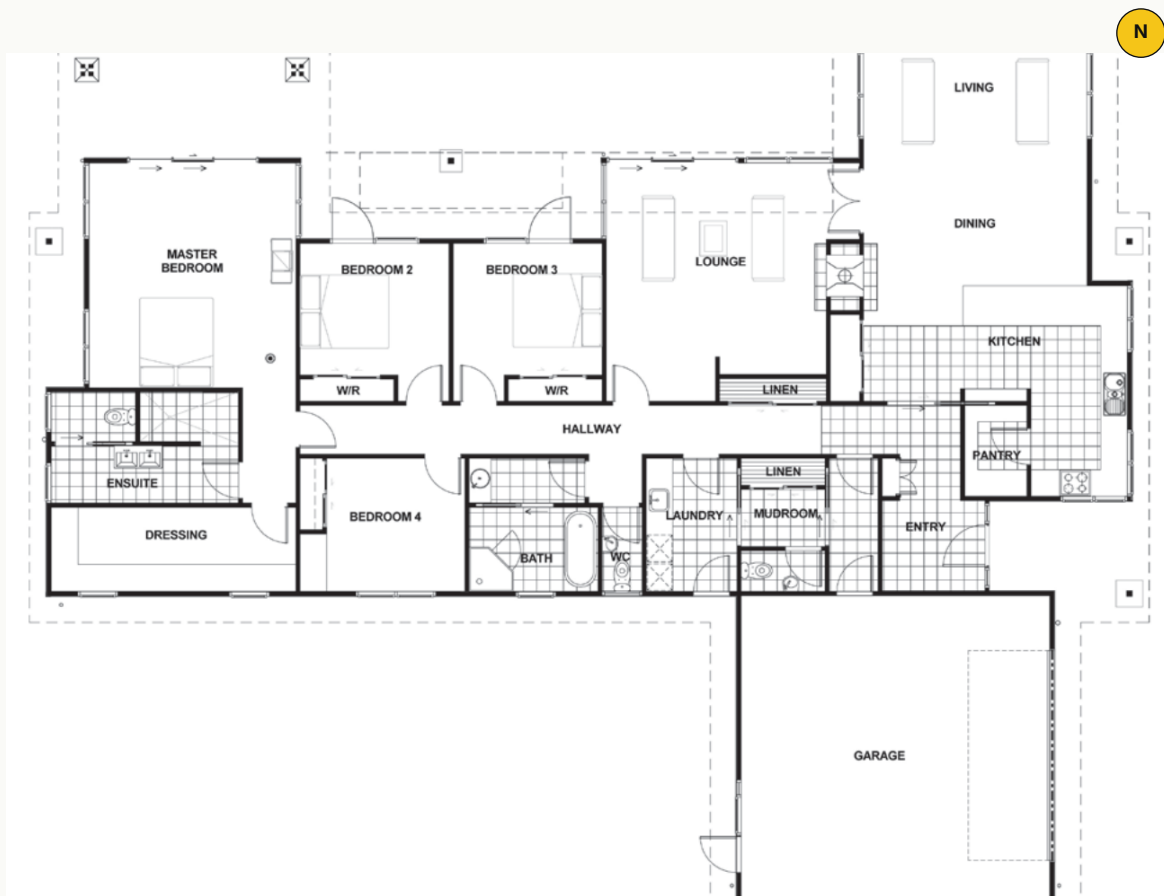
226
m²

4
bed

2
bath

2
garage

24.4 × 12.2
m footprint



24.4 m × 12.2 m · 226 m²

ABOUT THIS PLAN

A premium four-bedroom home with ensuite, study nook, and scullery — refined living for families who want room to breathe.

PREMIUM · 4 BEDROOM

Earnslaw

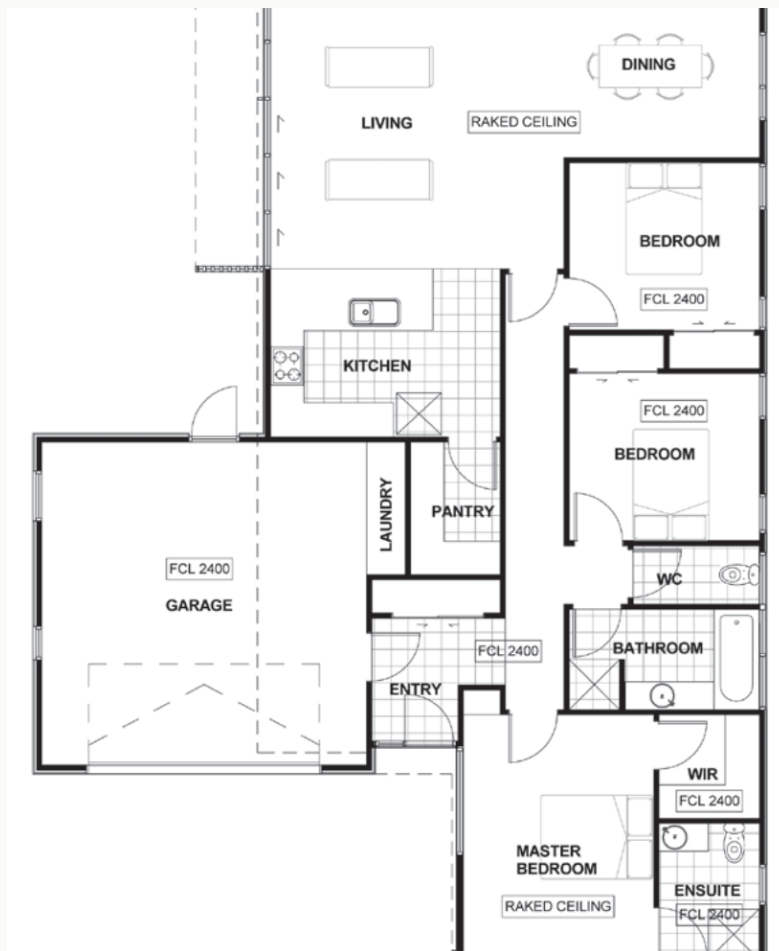
236
m²

4
bed

2
bath

2
garage

15.6 × 13.1
m footprint



15.6 m × 13.1 m · 236 m²

ABOUT THIS PLAN

A four-bedroom premium layout with oversized living, walk-in pantry, and dedicated media or second-living room.

PREMIUM · 4 BEDROOM

Cook

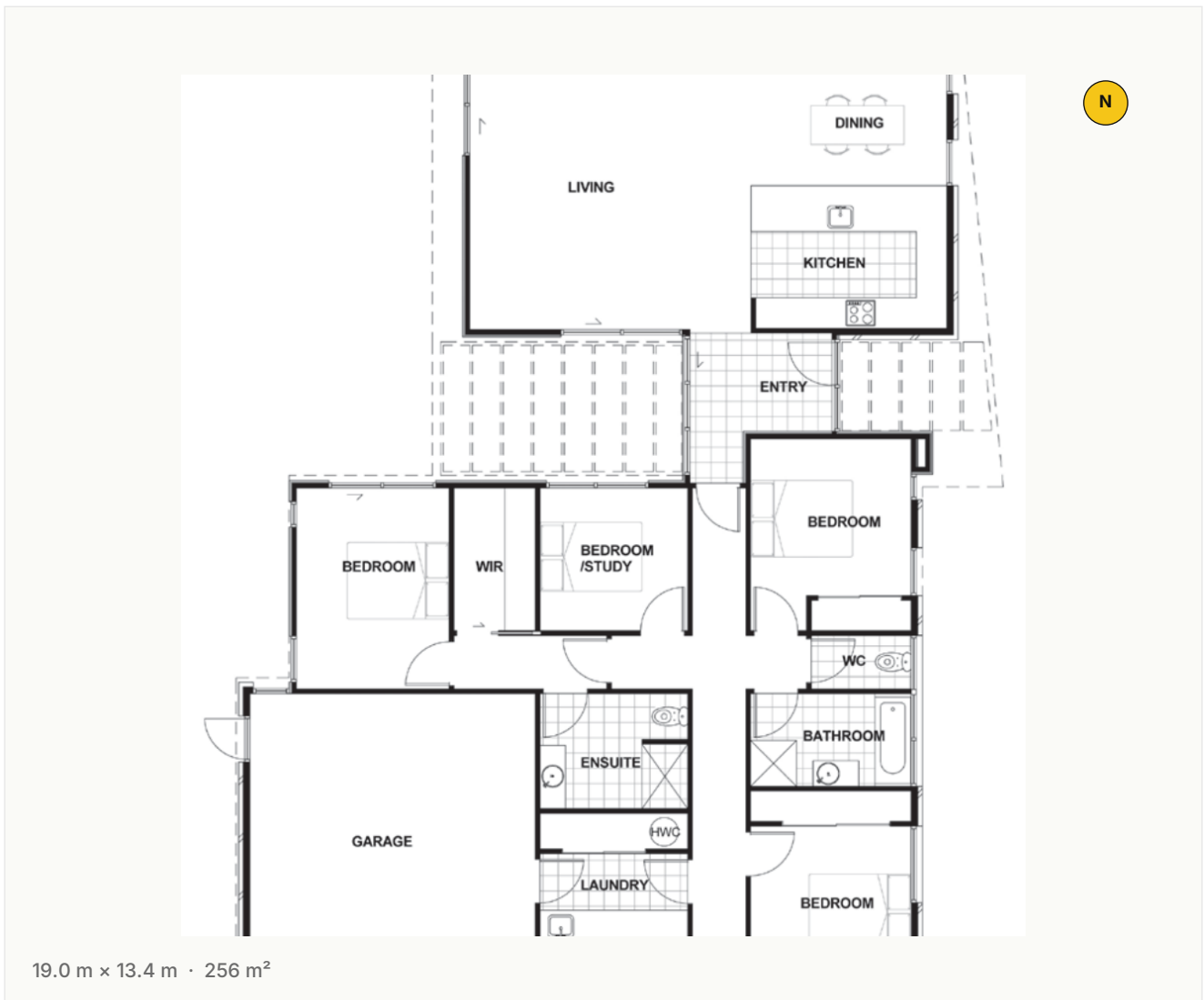
256
m²

4
bed

3
bath

2
garage

19.0 × 13.4
m footprint



ABOUT THIS PLAN

A flagship four-bedroom premium home with ensuite plus a third bathroom, generous master suite, and entertainer-scale kitchen and living.

PREMIUM · 4 BEDROOM

Tutoko

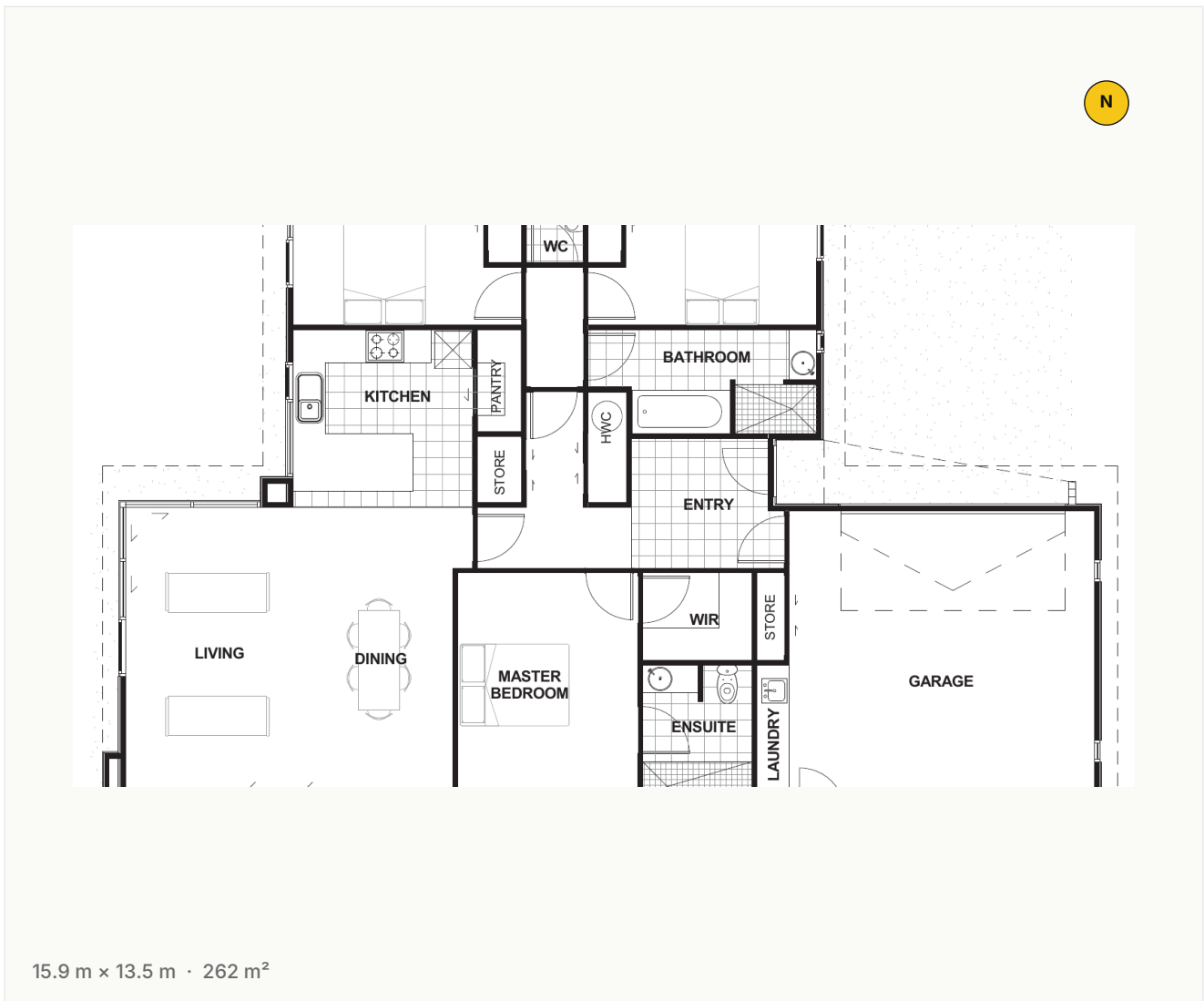
262
m²

4
bed

2
bath

2
garage

15.9 × 13.5
m footprint



ABOUT THIS PLAN

A striking four-bedroom premium design with broad open-plan living, ensuite and walk-in wardrobe, and integrated double garage.

PREMIUM · 4 BEDROOM

Dampier

268
m²

4
bed

2
bath

2
garage

22.8 × 14.4
m footprint



22.8 m × 14.4 m · 268 m²

ABOUT THIS PLAN

A bold four-bedroom premium plan — separate living zones, scullery, and ensuite master form a beautifully balanced family home.

PREMIUM · 4 BEDROOM

Hicks

278
m²

4
bed

3
bath

2
garage

20.5 × 14.5
m footprint



20.5 m × 14.5 m · 278 m²

ABOUT THIS PLAN

A flagship four-bedroom premium home with three bathrooms, formal lounge, and an expansive open-plan living core designed for entertaining.



Start a conversation.

We'd be glad to walk through any plan in this collection,
or adapt one to your site.

CONTACT

Roy Hamilton

PHONE

+64 21 968 613

EMAIL

roy@hamiltonprojects.co.nz

OFFICE

50 Acheron Drive

Riccarton, Christchurch

WEB

hamiltonprojects.co.nz